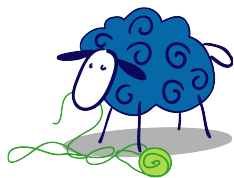


Rufflicious

FlexPattern #0910 by Kim Smith
Technical Editing by Jodi Lewanda



Knitting Matters™

Simple yet feminine, this summer top features a folded hem, slight waist shaping, and flutter sleeves. A ruffled collar frames the scoop neckline.



The sleeves feature a row of eyelets at the shoulder.

This model was made in BeBe CotSoy, a supersoft blend of organic cotton (50%) and soy (50%) that drapes beautifully (1.75 oz/50 g, 110 yds/100 m). Color: Grass Green (BC-09).

(Note: the label on CotSoy recommends 5 sts per inch, but for this project, a very nice fabric is attained at 5.75 sts per inch.)



PATTERN SPECIFICATIONS

Finished Chest Sizes: 32 (36, 41.25, 45.5, 49.25)"/81 (91, 105, 116, 125) cm

Choose the size that is 3-4" bigger than your actual chest measurement.

Gauge: 23 sts and 30 rows per 4" (10 cm) in stockinette stitch. (5.75 sts and 7.5 rows per inch)

Needles: 16" or 24" circular needles in size US6 (4.0 mm), or size you need to get gauge. As always, do a gauge swatch before you start. Note: the project is not knitted in the round, but circular needles are needed for the sleeves and collar. You'll also need a spare needle for attaching the folded hem. I suggest a 16" circular.

Yarn: 660 (760, 975, 1070, 1240) yds / 600 (690, 890, 975, 1130) meters of a dk weight yarn.

Notions: stitch marker, stitch holder or waste yarn, tapestry needle & scissors.

© 2009 Knitting Matters LLC (www.knittingmatters.com)

Member of the Association of Knitwear Designers and The National Needlearts Association

Copying, scanning, emailing or otherwise transmitting this pattern without written permission is a copyright violation.