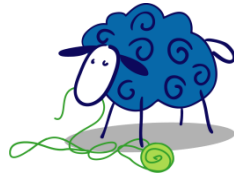


# Giddy

FlexPattern #1001 by Kim Clair Smith  
Tech editing by Jodi Lewanda



# Knitting Matters™

This quick little cap is fun to make and wear, and is suitable for men and women. The easy stranded stitch pattern is great for solid color yarns and handpainted ones as well.



This model was made using Cascade 220, color 7823 (100% wool) (3.5 oz/100g) (220 yards/200 meters)

## PATTERN SPECIFICATIONS

**Sizes:** Adult S/M (L) 18 (21.5)"/46 (55) cm (choose size that is approx. 2" smaller than your head to insure a snug fit). Measurement from brim to center top is approx. 8 (9)" /20 (23)cm.

**Gauge:** 20 sts and 32 rows per 4" (10 cm) in stranded stitch pattern.

**Needles:** Size 8US (5.0mm) double point needles (or size you need to get gauge). (You can also use long circular needles and the magic loop method if you're familiar with that way of knitting in the round.)

**Yarn:** 150 (190) yards/ 136 (173) meters of a worsted weight yarn.

**Notions needed:** Crochet hook size 5.0mm (optional), scissors, tapestry needle, and your *favorite* single stitch marker. (I have cute sheep markers that I love to use!)

© 2010 Knitting Matters LLC ([www.knittingmatters.com](http://www.knittingmatters.com))

Member of the Association of Knitwear Designers and The National Needlearts Association

Copying, scanning, emailing or otherwise transmitting this pattern without written permission is a copyright violation.

Page 1 of 2 - Giddy #1001